



EVENGINE — Earned Value Performance Management (EVPM) for Financial and Technical Project Management Professionals

EVENGINE™ – Project Control software for financial and technical project management professionals provides a sophisticated and structured approach to Earned Value Performance Management (**EVPM**) for Portfolio / Program / Project Control and Financial Performance Reporting.

EVENGINE utilizes cost, work and quantity / material data imported from Microsoft® Office Project 2003 or Microsoft Office Project 2007, as well as Microsoft Project Server 2003 or 2007, Primavera SureTrak® and Primavera®: Versions 3, 5 & 6 to create a Microsoft Office Excel 2003 or 2007 workbook or data entered directly via a spreadsheet wizard.

EVENGINE has the option to substitute planning software calculated task-based cost, work and material / quantity actuals with those collected by corporate systems such as SAP™, PeopleSoft™, Oracle Financials™ or any other job cost accounting system using a simple Microsoft Excel drop file.

EVENGINE software is a Microsoft Excel Add-in utility that covers all computational requirements to deliver commercial **EVPM** performance reporting to internationally accepted standards and guidelines. Specifically:

- Project Management Institutes *PMBOK® Guide* — Fourth Addition, together with their Practice Standard for Earned Value Management,
- US Department of Defense DoD 5000.2-R — *Mandatory Procedures for Major Defense Acquisition Programs (MDAPS) and Major Automated Information System (MAIS) Acquisition Programs*, and
- ANSI/EIA-748-B — *Standard on Earned Value Management System guidelines*.

EVENGINE extends **EVPM** reporting to include profit and loss analysis, financial modeling, and performance measurement using cost, work and material / quantity metrics and indices.

EVENGINE's Cost Administration features simplify and automate project claims and payment processes.

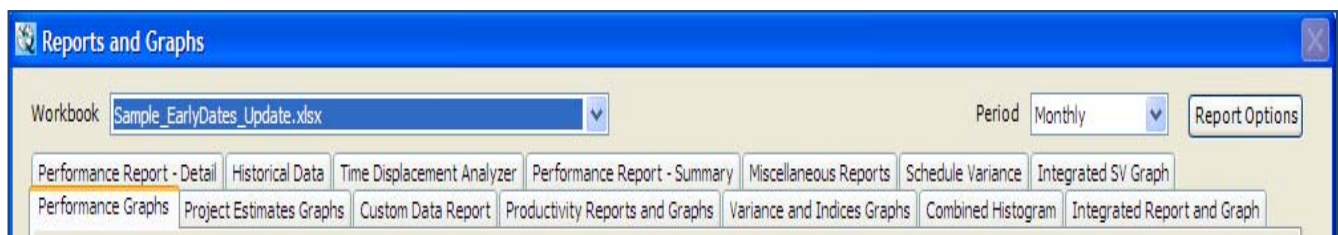
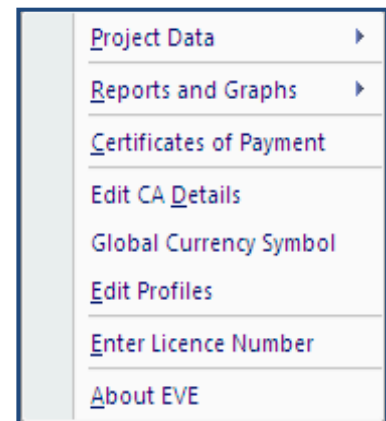
EVENGINE offers significant savings in project administration cost and time. Identifies both positive and negative performance trends and gives management an opportunity to take advantage of good performance or take corrective action to ensure budget and time KPIs (Key Performance Indicators) are met.

The **EVENGINE** software is a Microsoft **.NET** application that installs to your nominated programs drive and is added to your Microsoft Excel Ribbon as **EVE Utilities** in the **Add-in Tab**. All **EVENGINE** functionality is activated through the **EVE Utilities** menu.

EVENGINE's planning input data is processed using a propriety **EVE** processor. Report data can be calculated by day, week, month, quarter, or year.

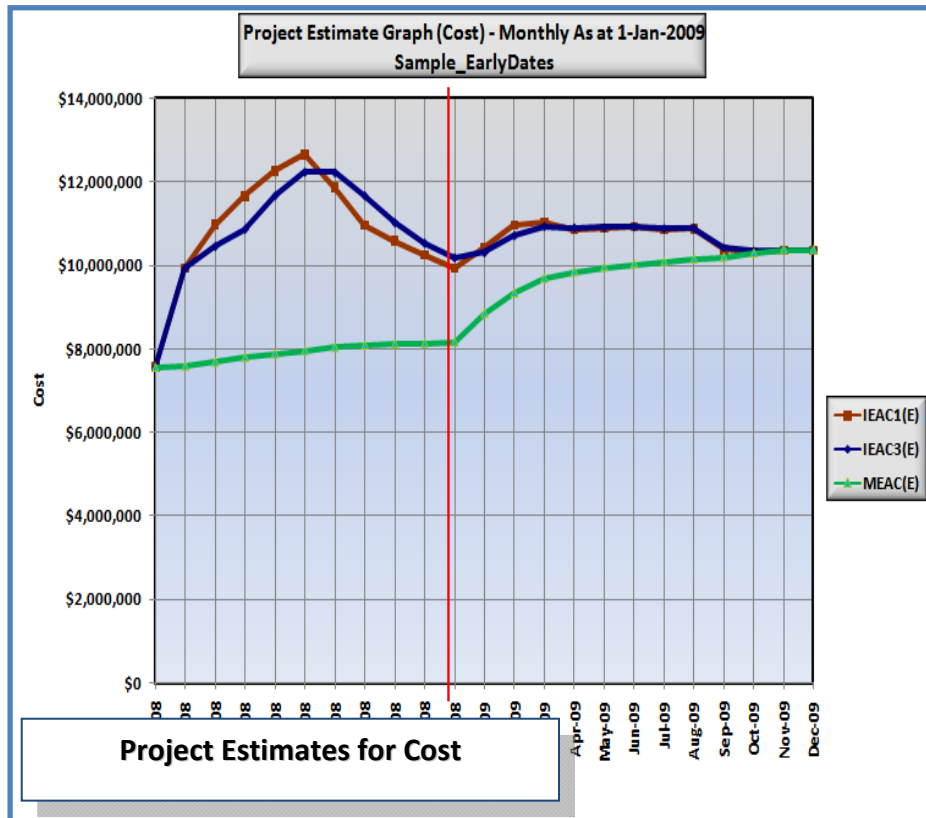
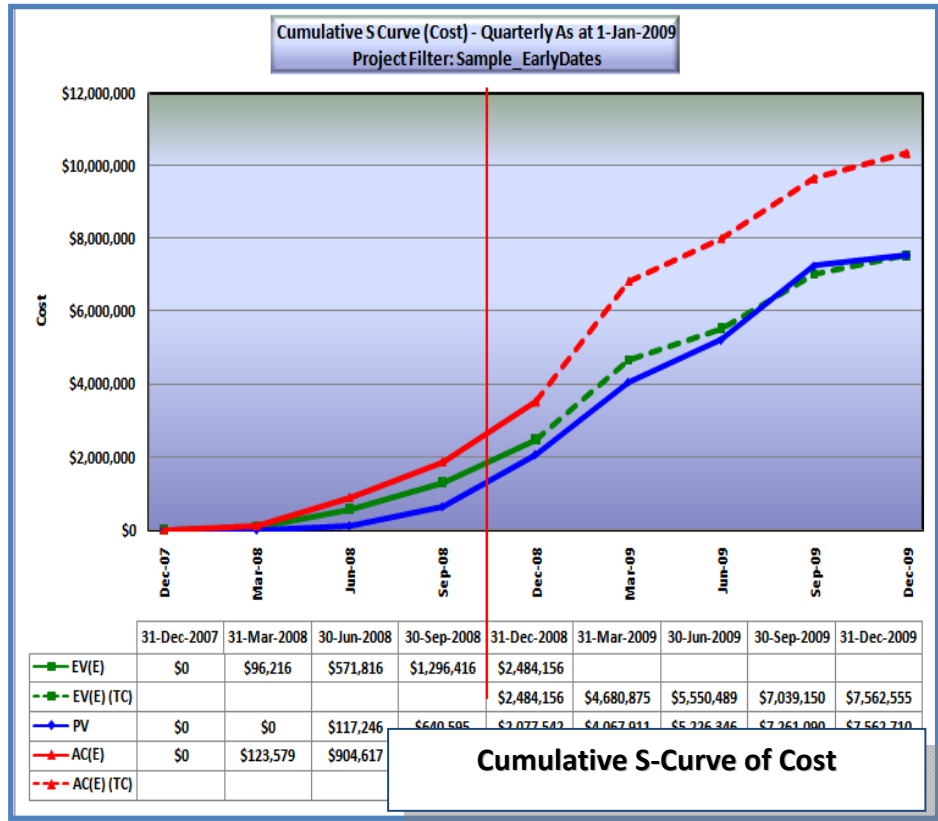
EVENGINE facilitates performance reporting by:

- **WBS (Work Breakdown Structure)** mirroring the outline structure of the project schedule.
- **OBS (Organization Breakdown Structure)** mirroring the projects administrative and execution strategy.
- **CA (Control Accounts)** mirroring how the project is decomposed into work packages.



EVENGINE generates a wide-range of graphical output and reports. Specifically:

- Cost Performance Reports & Graphs** — includes Cumulative S Curves for cost, work and material / quantity, Histograms for cost, work and quantity / material and Cumulative Percent Complete for cost, work and material / quantity.
- Variance & Indices Graphs** — visualizes KPIs and trends against the project's baseline.
- Integrated Report Graphs** — summarizes and visualizes the whole project performance by selected groups of OBS packages. Data is normalized to percentages and can be presented in days, weeks, months, quarters, or years.



- Project Estimates Graph** — forecast and trend the project cost, work and material / quantity usage at completion based on the historical KPIs [Key Performance Indicators] to the report period. The graph can display four different kinds of Independent Estimates at Completion [IEAC], plus Mathematical Estimate at Completion [WEAC], and Estimate at Completion [EAC] to the Status Date or for all project periods.

- **Project Historical Data Graphs** — tracks the change in historical data for BAC (Budget At Completion), EAC (Estimate At Completion) for cost, work and material / quantity over the project's life cycle at CA (Control Accounts) and project level.
- **Performance Summary Report** — analyzes performance to the Status Date and to completion. The KPIs used conform to industry standards including the *PMBOK® Guide* Fourth Addition. This data in the report forms the basis of all other graphs and reports generated by **EVENGINE**. The Report covers cost, work, and material / quantity metrics.
- **Performance Detail Report** — shows the full distribution of cost, work, and material / quantity by report period as either a period or cumulative value and can be presented by task or rolled up to the OBS (Organization Breakdown Structure).
- **EVENGINE Custom Data Report** — allows the user to specify the report data to be presented. Data is formatted in an easy to use tabular format. Data report tables can be specified for cost, work and material / quantity usage.

- **DoD Cost Performance Reports** — The US Department of Defense mandates project performance reporting for all medium to large Government projects to **US DOD 5000.2-R. EVENGINE** generates the key mandated CPR [Cost Performance Reports] including CPR 1, 2, 3 and 4.

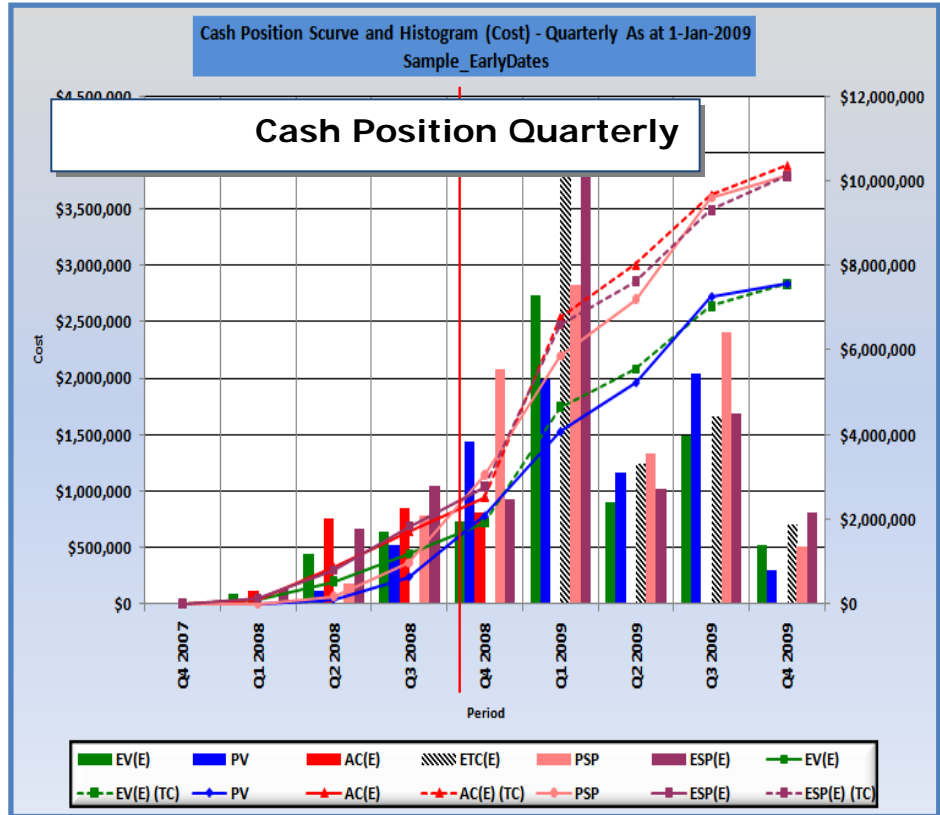
CPR 3 Format									
CA Code Overhead - C00 OBS Code: All OBS									
WBS Code: All WBS									
This Period Closing Date: 12/31/2008									
Activity	WBS	CA	BAC Total Budget	EV(E) Cum to Period	EV(E) for Period	30-Sep-2008	31-Dec-2008	31-Mar-2009	30-Jun-2009
Overall Co	XYZ-08-1.1	Overhead - C	\$49,700	\$49,700	\$0	\$0	\$0	\$0	\$0
Earthwork	XYZ-08-1.7	Overhead - C	\$14,200	\$14,200	\$0	\$0	\$0	\$0	\$0
Project M	XYZ-08-2.1.4	Overhead - C	\$27,390	\$15,877	\$6,923	\$6,772	\$4,740	\$0	\$0
Project M	XYZ-08-2.2.4	Overhead - C	\$30,554	\$15,879	\$6,924	\$6,773	\$6,773	\$1,129	\$0
Project M	XYZ-08-2.3.4	Overhead - C	\$19,830	\$15,789	\$6,884	\$4,041	\$0	\$0	\$0
Project M	XYZ-08-2.4.4	Overhead - C	\$34,334	\$15,922	\$6,942	\$6,791	\$6,791	\$4,829	\$0
Project M	XYZ-08-2.5.4	Overhead - C	\$30,014	\$15,872	\$6,921	\$6,770	\$6,770	\$602	\$0
Commissi	XYZ-08-2.6	Overhead - C	\$329,625	\$0	\$0	\$0	\$0	\$289,056	\$40,569
Contract C	XYZ-08-2.7	Overhead - C	\$1,080	\$0	\$0	\$0	\$0	\$0	\$1,080
Total			\$537,705	\$143,239	\$34,594	\$31,148	\$25,075	\$295,616	\$41,649

- **Productivity Graphs & Reports** — facilitates the benchmarking of Key Performance Indicator's (KPI's) by report period interval and by average against published industry norms. KPIs include:
 - Cost per Unit of Work, Actual Versus Planned
 - Cost per Unit of Quantity, Actual Versus Planned
 - Units of Work per Quantity, Actual Versus Planned
 - Units of Quantity, Actual Versus Planned
- **Claims & Payment Certification** — **EVENGINE** Claims and Payment Certification functionality is designed to significantly improve the efficiency of a project's contract payments administration process. As project work packages/ control accounts (**CA**) are committed, costs can be distributed against their corresponding budgeted tasks. **EVENGINE** tracks BAC (Budget At Completion), EAC (Estimate At Completion Costs) and SP (Sell Price / Revenue). As tasks are completed they earn value and incur the contracted cost.
- **Performance Reports & Graphs** — used to understand the separation of work fronts as represented by the CA Cost Accounts. These graphs and reports are useful in understanding the trade separation for industrial projects and give an understanding of potential for trade interference and congestion of works.

- **Investment Analysis / Finance Modeling** — similar to establishing the cash position of the project except there is no translation of data mirroring the payment terms. **EVENGINE** facilitates the modeling of expenditures represented by the EAC (Estimate At Completion) and Revenue represented by the SP (Sell Price). Finance Interest Rate can be injected to adjust for a cash negative position and a Discount Rate used to calculate the NPV (Net Present Value).

- **Project Cash Position Reports & Graphs** — allows the analysis of the actual cash position based on the payment conditions negotiated between contractors providing the goods and services and the payment authority.

- **Customer Tailored Reports & Graphs** — in addition to the wide-ranging reports referenced in the preceding points, **SUPERTECH PROJECT MANAGEMENT** can develop customized graphs and reports to suit a customer's specific requirements.



Training Services —

EVENGINE ships with extensive documentation covering software installation, the principles and practice of **EVPM**, all functionality and operational aspects of **EVENGINE**, including guidance on data, graphs and report interpretation together with Microsoft Project templates with reserved custom fields required by the **EVE** processor.

Supertech strongly recommends a minimum of a ONE-day hands-on training workshop to acquaint users with the full functionality of **EVENGINE** and advice on the Planning Software data structure requirements to facilitate full integration with **EVENGINE**.

Supertech can provide consulting and mentoring services during the implementation of **EVENGINE** and can also assist in structuring project schedules take full advantage of **EVPM** functionality.

Asia, Australia and Pacific Basin:

Supertech Project Management (Australia) Pty Ltd

Tel: +61 (0) 3 98666866

E-mail: EVPM@suptec.com.au

North America:

Supertech Project Management Inc.

Tel: +1-888-386-3885

E-mail: EVPM@suptec.us

UK and Europe:

Supertech Project Management (Europe) Ltd

Tel: +44 (0) 845 409 0550

E-mail: EVPM@suptec.co.uk